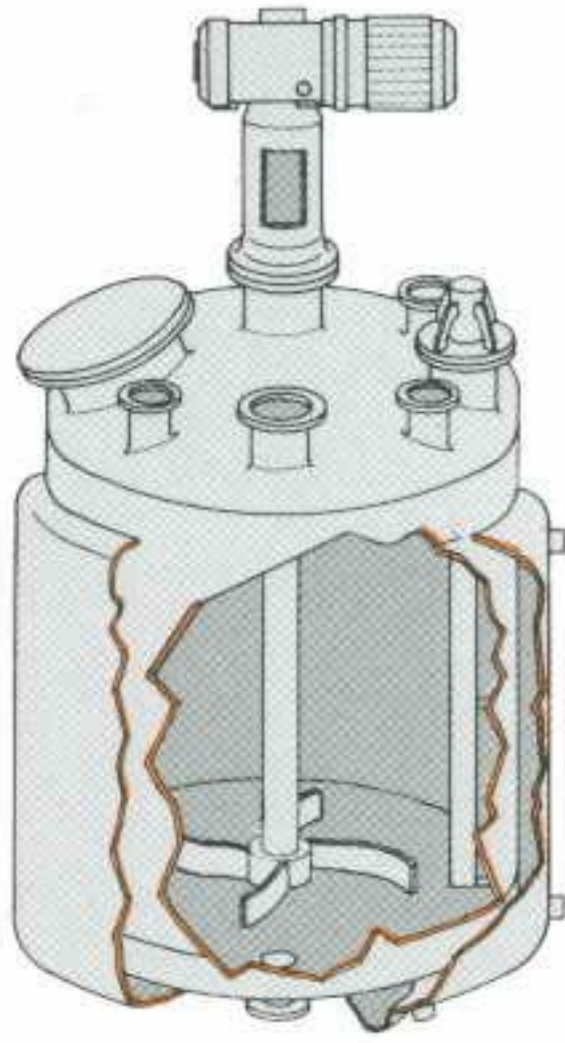
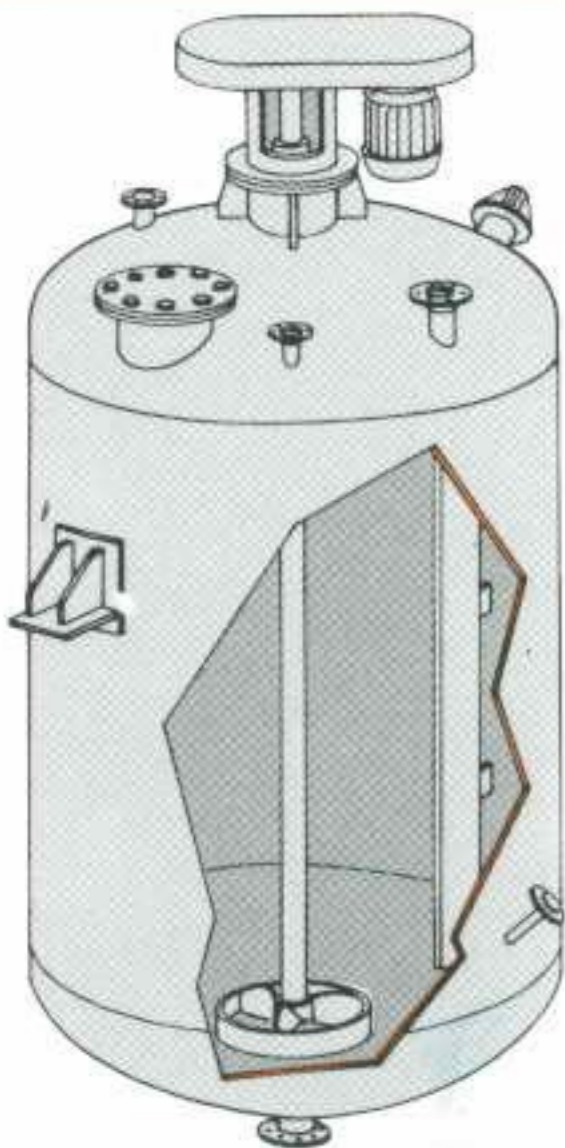


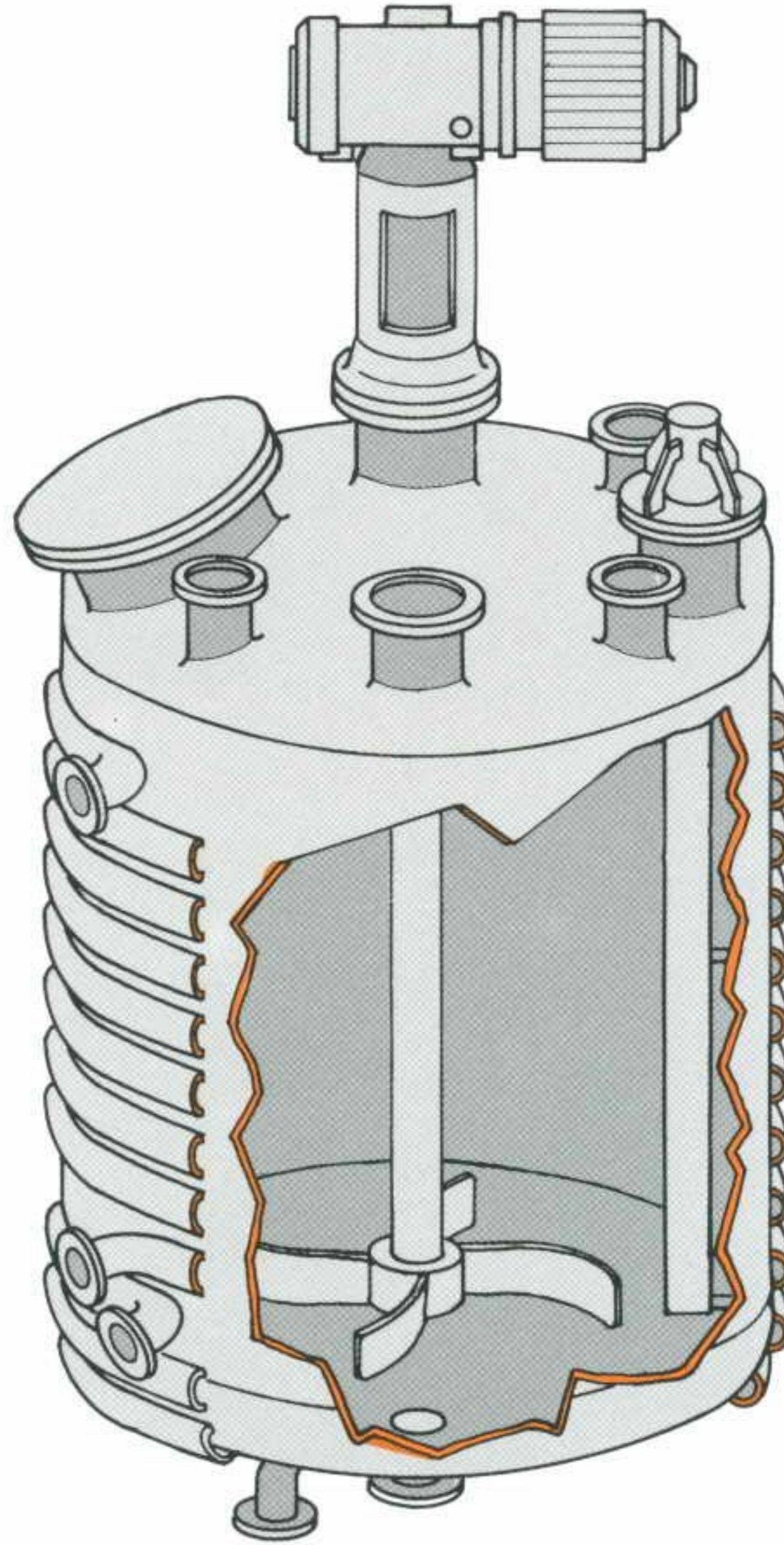
OPTIONS



**Reactor
Double Jacket**



Reactor



HISH **Reactor** **Half Pipe** **Jacket**

HISH REACTS TO YOUR PROCESS DEMANDS

Hish offers a wide range of design options and technical assistance you may need in selecting the best reactor suitable for the process requirements and budget.

We design and manufacture custom made reactors in carbon and stainless steel as well as other specialized metals.

Half pipe jackets are most versatile.

They can be zoned for more efficient partial batch processing.

The half pipe design also permits use of thinner vessel sheets than conventional jackets at high internal pressure.

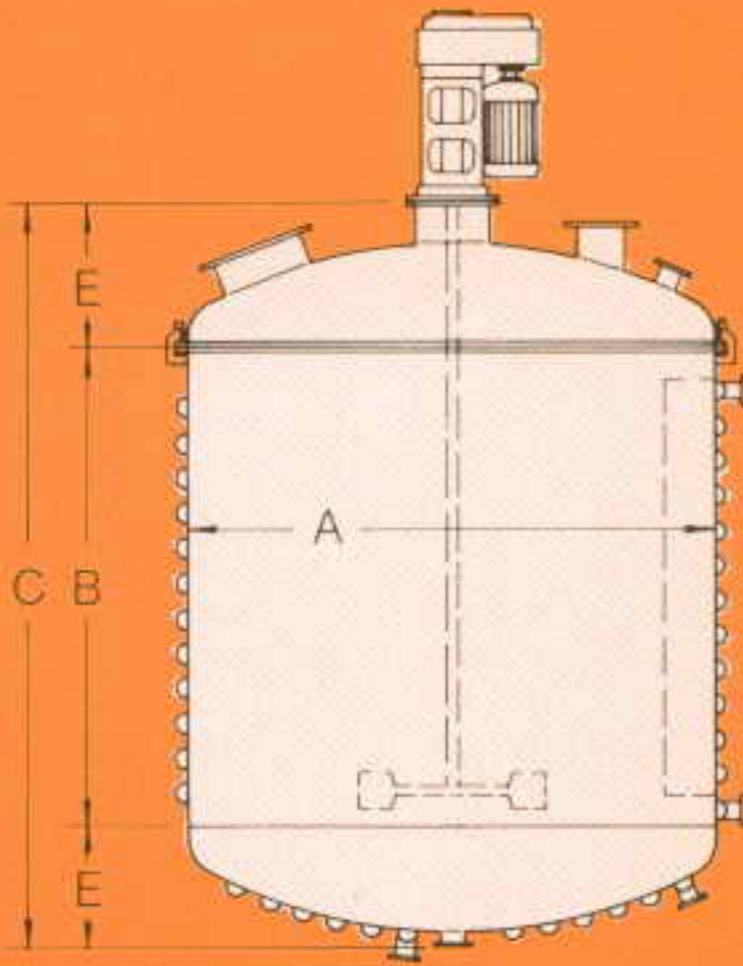
Our engineering is renowned for:

- Economy of design
- Efficiency of mixing and operation
- Quality of manufacture
- Exceptionally long working life

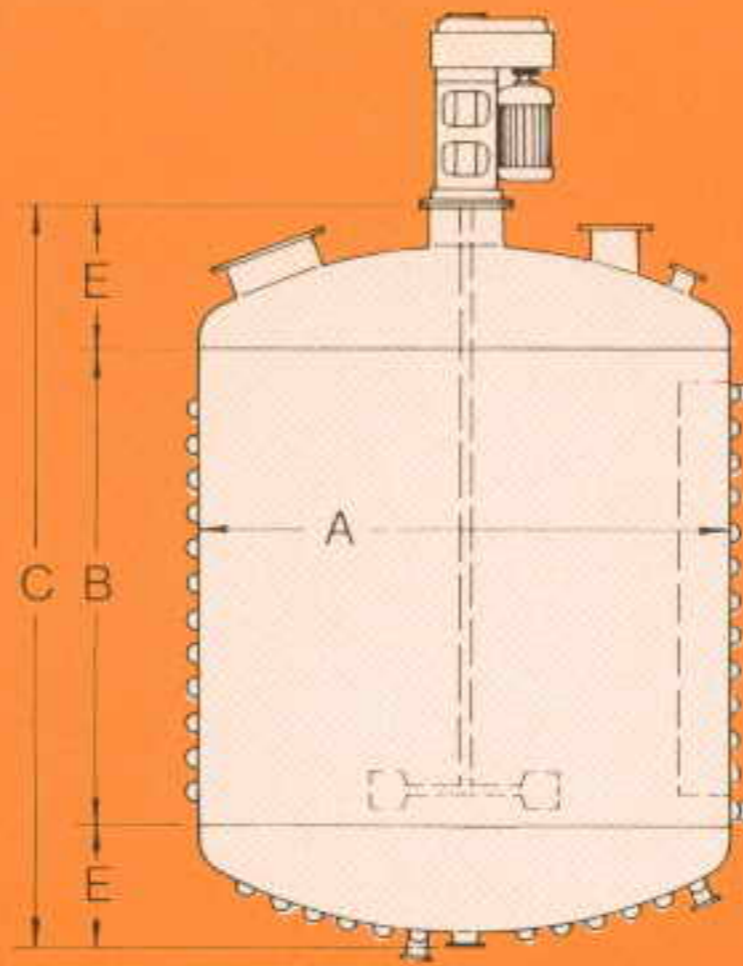
AT HISH WE HAVE THE ANSWERS

GENERAL DATA

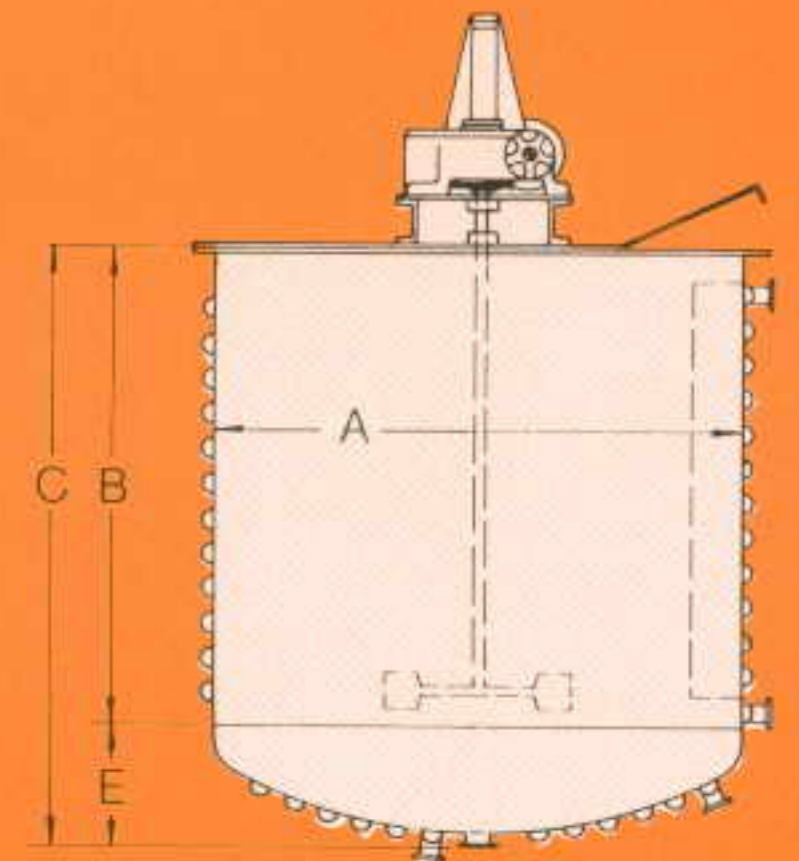
SPECIFICATION FOR TYPICAL VESSELS



TYPE HP.CT CLAMPED TOP



TYPE HP.CL.T CLOSED TOP

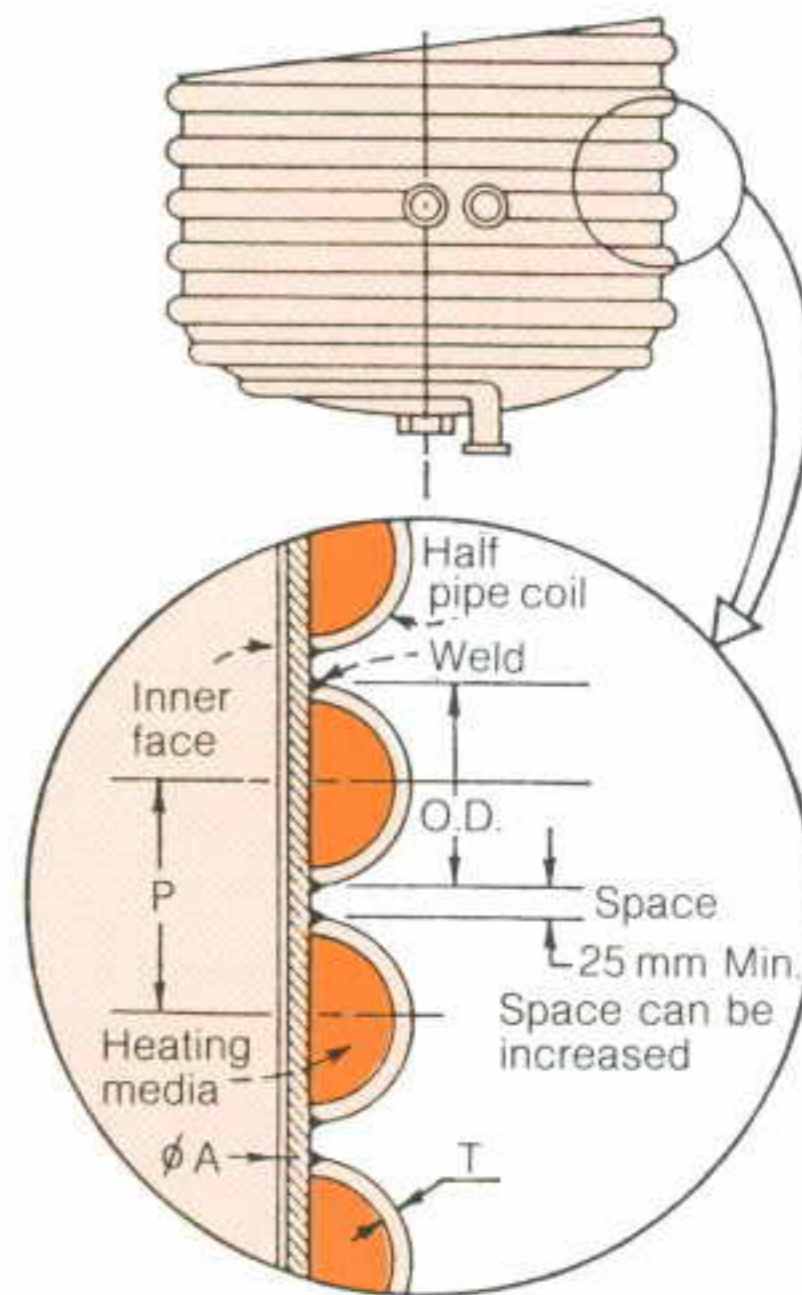


TYPE HP.OT OPEN TOP

DIMENSIONS

V LITERS	A mm.	B mm.	E mm.	C mm.
50	380	500	160	820
75	450	550	190	930
100	450	650	200	1050
200	600	750	250	1250
500	790	1000	300	1600
750	960	1000	350	1700
1000	960	1400	400	2200
2000	1290	1500	450	2400
3000	1400	2000	450	2900
4000	1580	2000	450	2900
6000	1800	2400	450	3300
7500	2000	2500	470	3440
10,000	2200	2700	500	3700

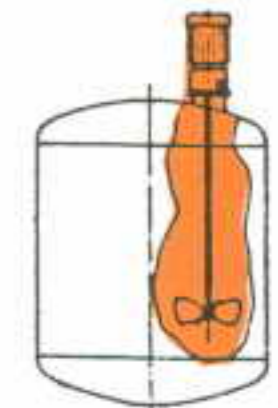
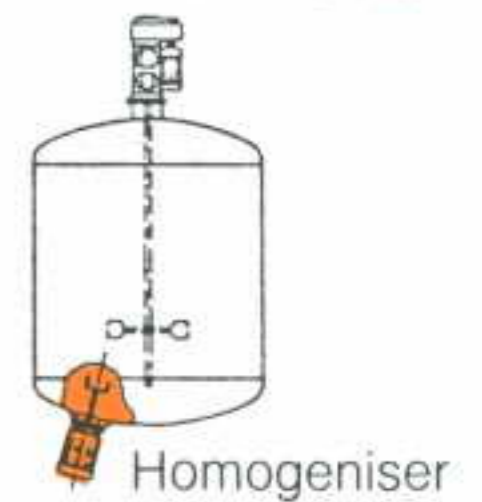
HALF-PILE JACKET DETAILS



HALF PIPE

SIZE	O.D (mm)	T mm	P. MIN mm
2"	60	2	85
2½"	75	2½	100
3"	90	3	115
4"	115	4	140

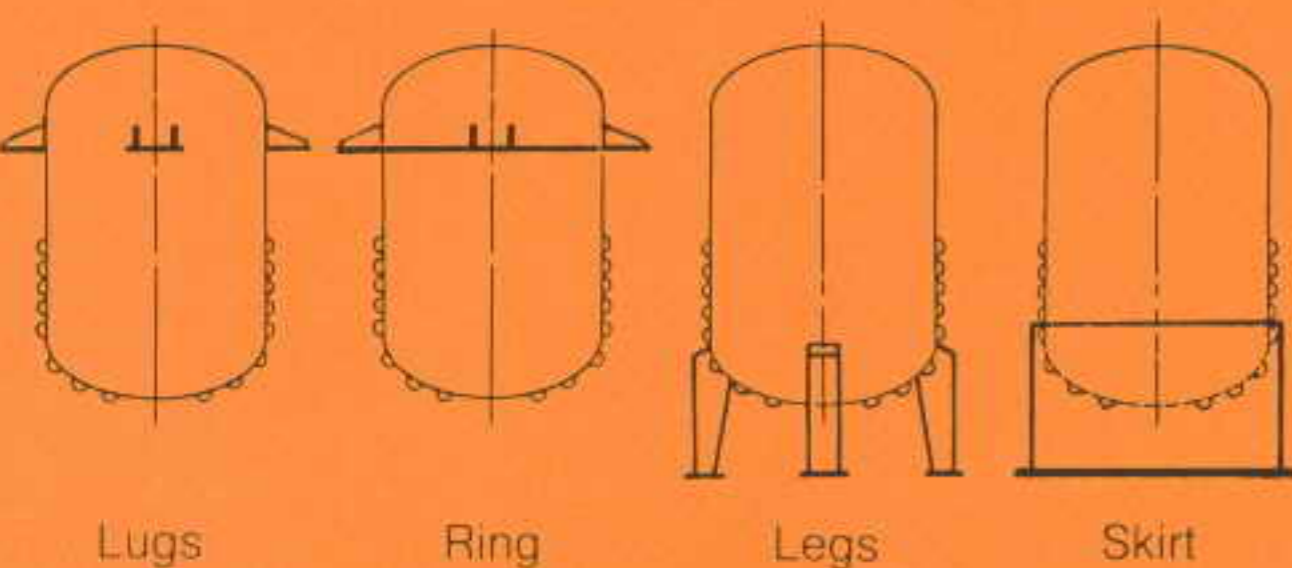
ARRANGEMENT MIXER OPTIONS



FEATURES

- Computerised thermal and mechanical designing, based on 50 years in-house accumulated experience in the chemical and petrochemical industries.
- Designed and tested to ASME VIII Div i and TEMA standards
- Components manufactured on latest CNC machining equipment
- Cost effective design

SUPPORT OPTIONS



AGITATOR OPTIONS

