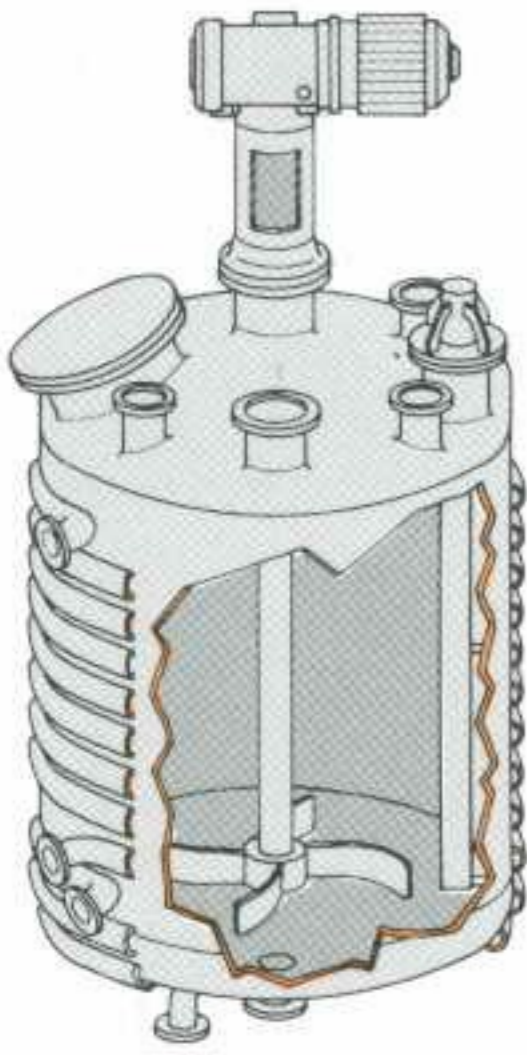
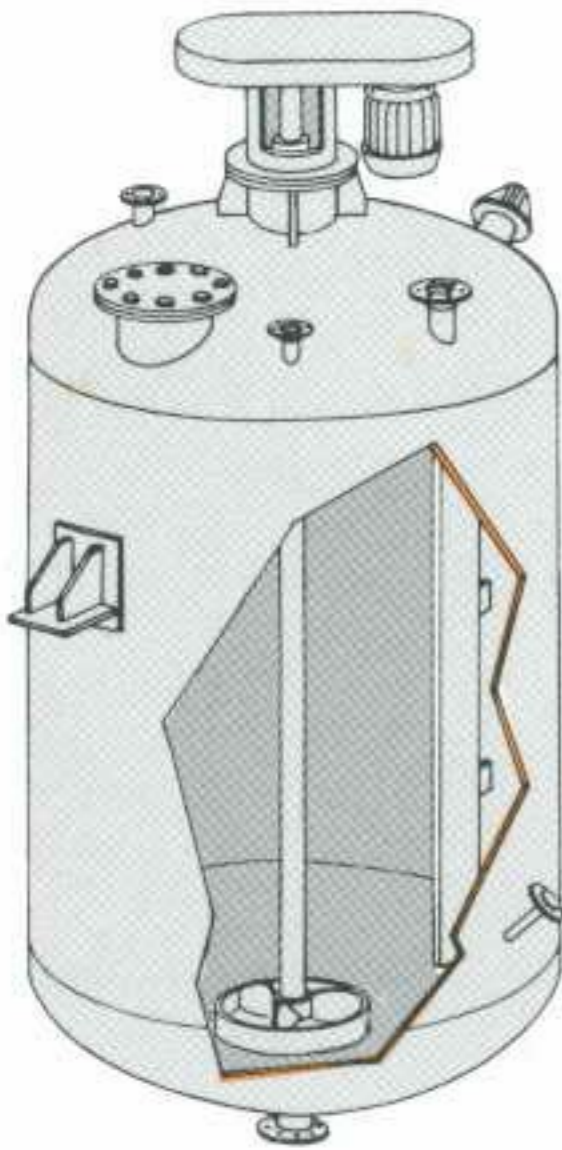


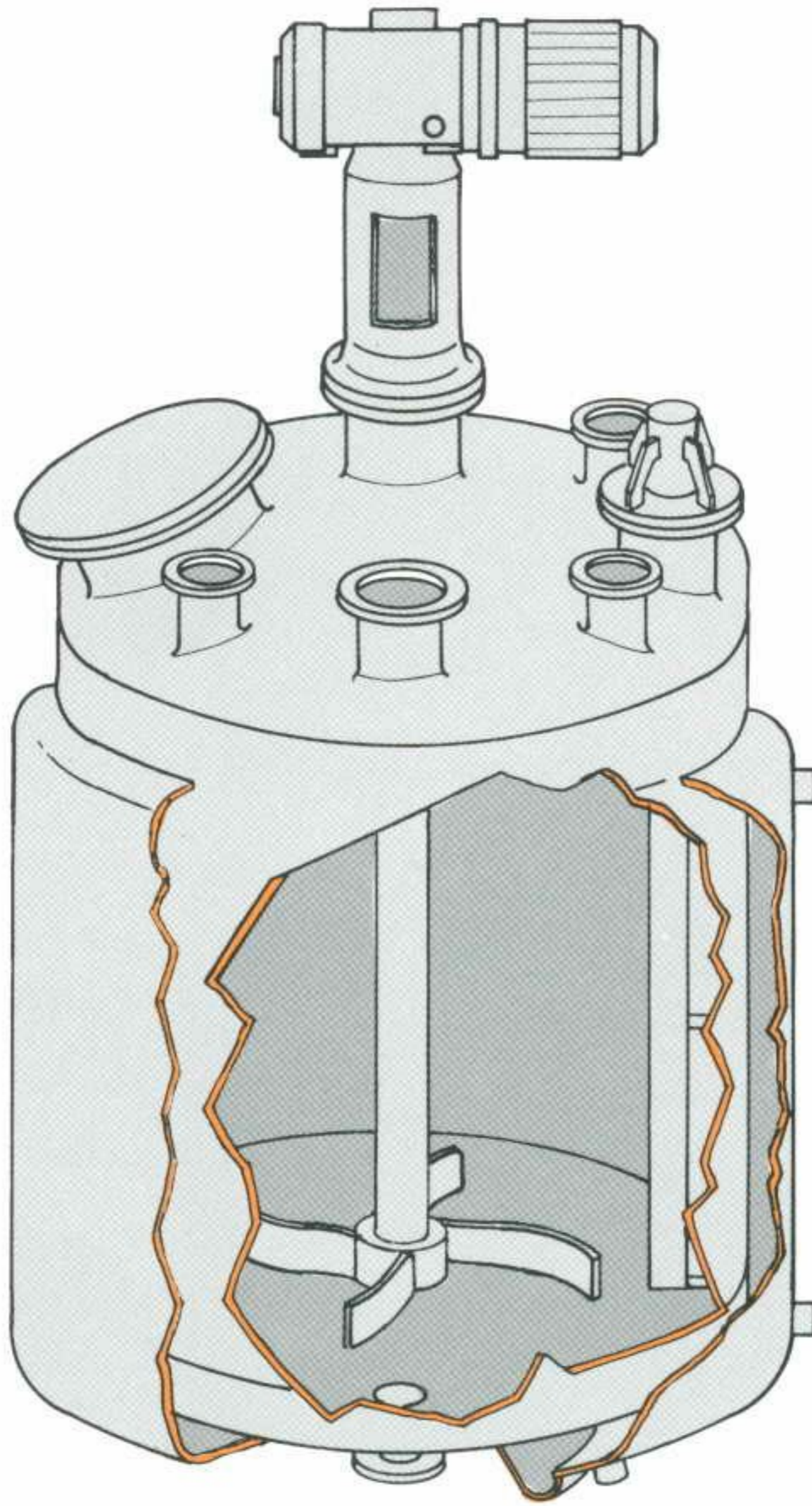
## OPTIONS



Reactor  
Half Pipe Jacket



Reactor



## HISH Reactor Double Jacket

### HISH REACTS TO YOUR PROCESS DEMANDS

Hish offers a wide range of design options and technical assistance you may need in selecting the best reactor suitable for the process requirements and budget.

We design and manufacture custom made reactors in carbon and stainless steel as well as other specialized metals.

Double jackets are an effective method for heating or cooling vessels in applications whereby internal pressure exceeds jacket pressure by a factor of two or more.

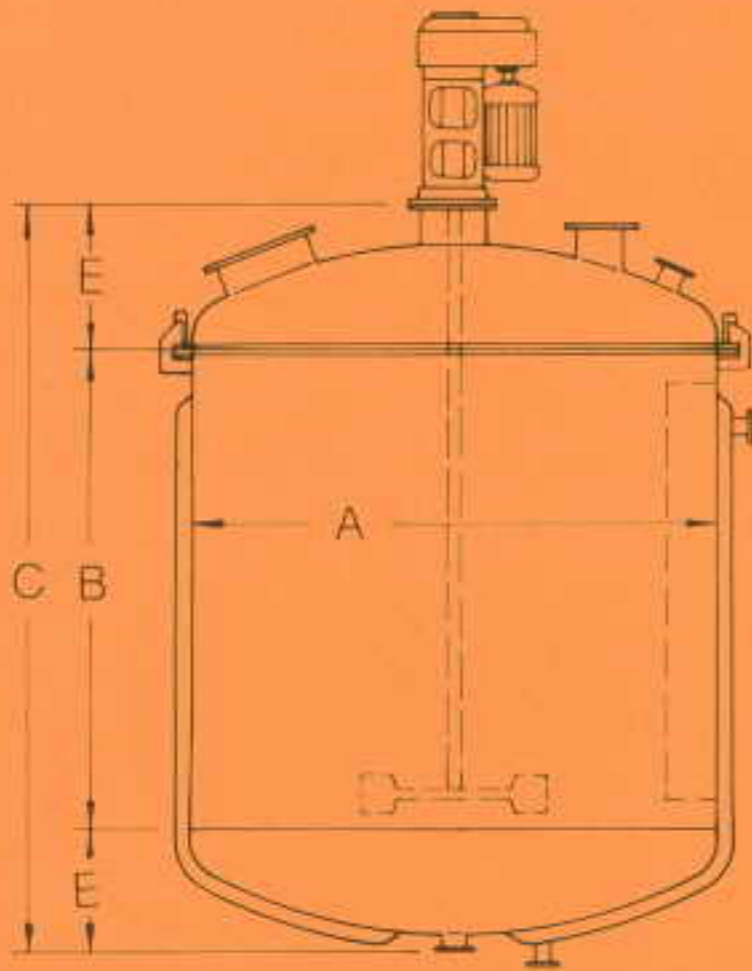
Our engineering is renowned for:

- Economy of design
- Efficiency of mixing and operation
- Quality of manufacture
- Exceptionally long working life

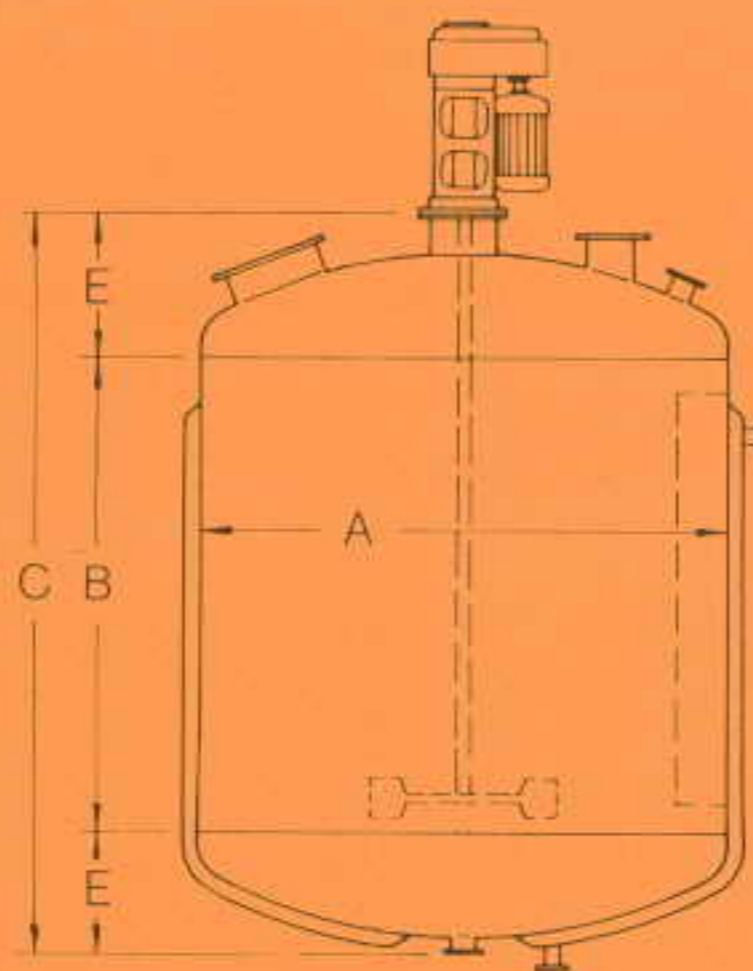
**AT HISH WE HAVE THE ANSWERS**

# GENERAL DATA

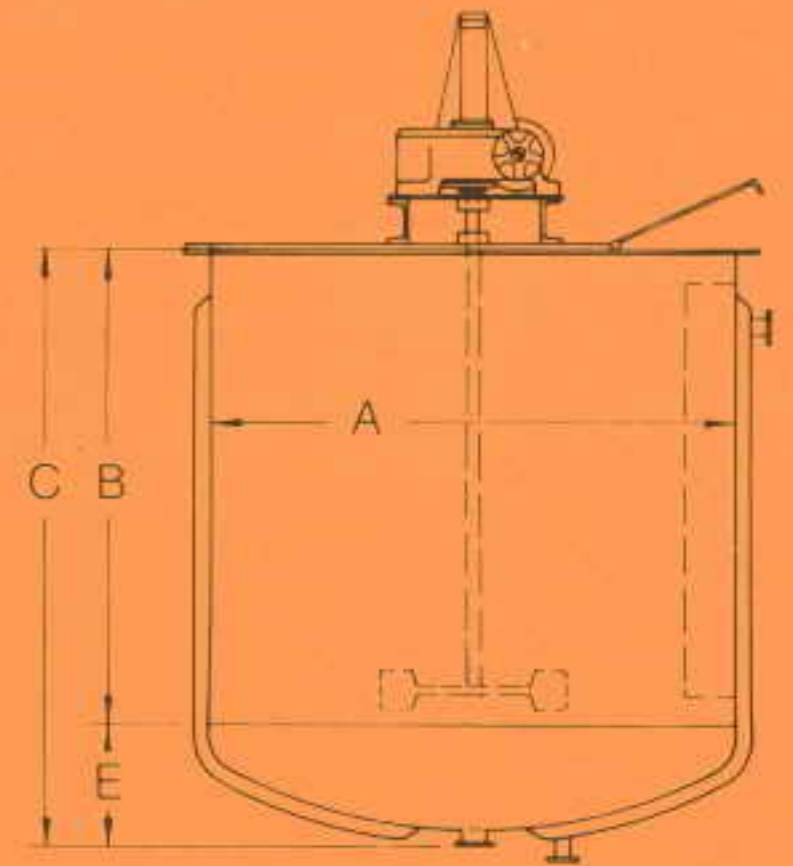
## SPECIFICATION FOR TYPICAL VESSELS



TYPE J.C.T. CLAMPED TOP



TYPE J.CL.T CLOSED TOP

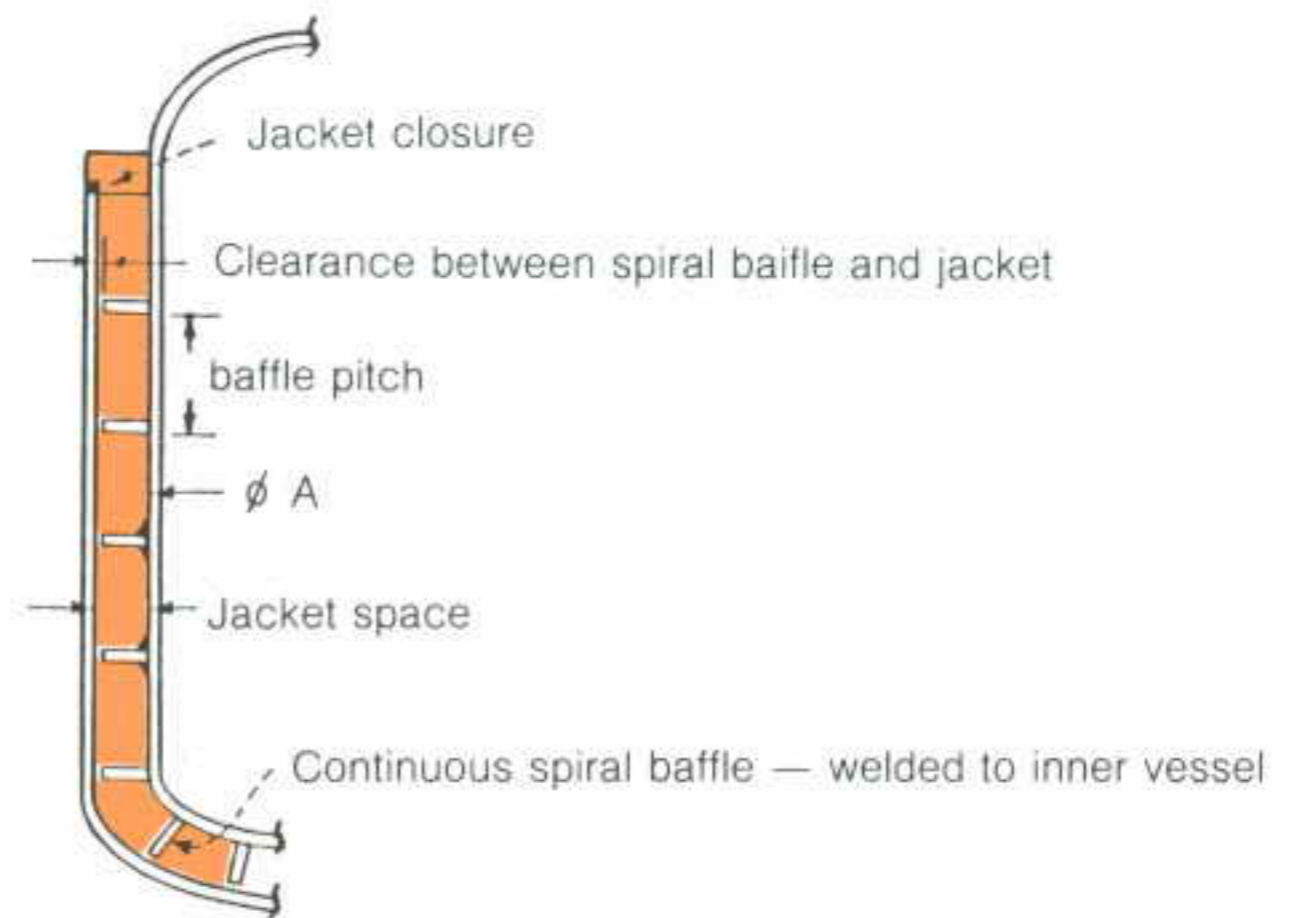


TYPE J.OT OPEN TOP

### DIMENSIONS

V LITERS	A mm.	B mm.	E mm.	C mm.
50	380	500	160	820
75	450	550	190	930
100	450	650	200	1050
200	600	750	250	1250
500	790	1000	300	1600
750	960	1000	350	1700
1000	960	1400	400	2200
2000	1290	1500	450	2400
3000	1400	2000	450	2900
4000	1580	2000	450	2900
6000	1800	2400	450	3300
7500	2000	2500	470	3440
10,000	2200	2700	500	3700

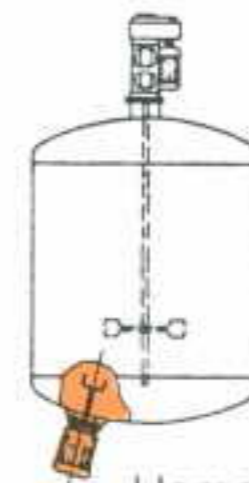
### JACKET DETAILS



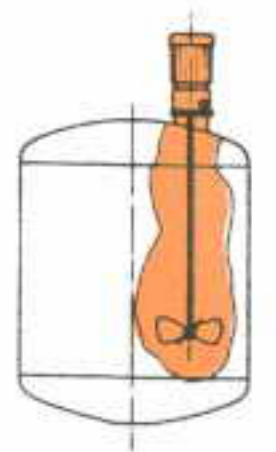
### FEATURES

- Computerised thermal and mechanical designing, based on 50 years in-house accumulated experience in the chemical and petrochemical industries.
- Designed and tested to ASME VIII Div i and TEMA standards
- Components manufactured on latest CNC machining equipment
- Cost effective design

### ARRANGEMENT MIXER OPTIONS

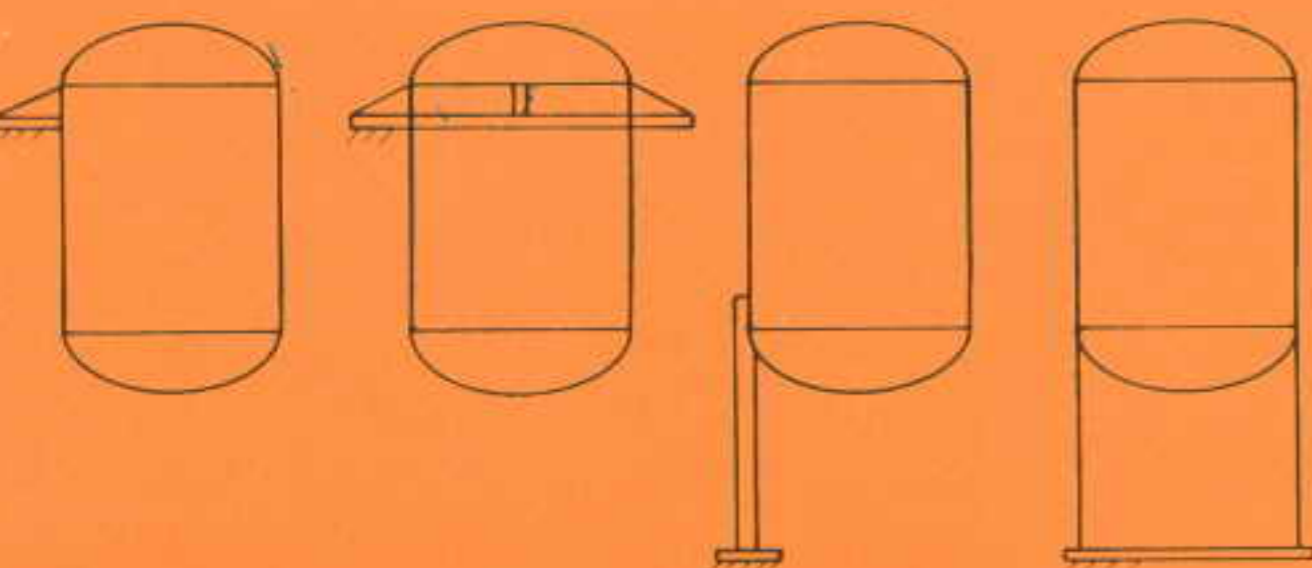


Homogeniser



Off centre Mixer

### SUPPORT OPTIONS



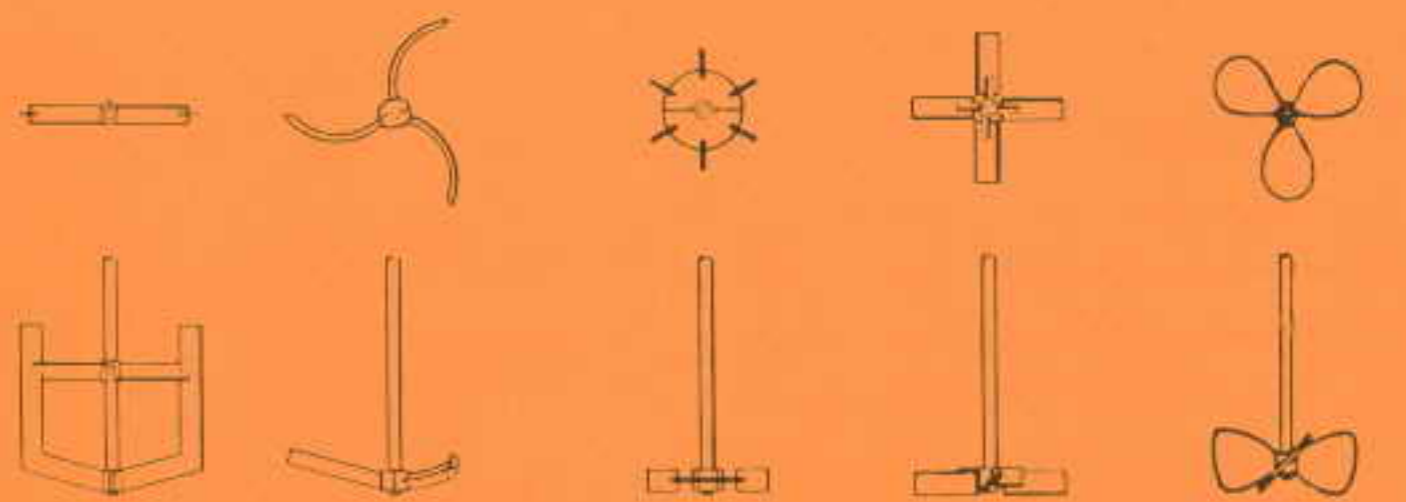
Lugs

Ring

Legs

Skirt

### AGITATOR OPTIONS



Anchor

Retreat  
curve  
impeller

Straight  
blade  
turbine

Inclined  
blade  
turbine

Propellor